

Available Equipment Hot Sheet

<p>Reference No: 1144</p> <p>Make: Shuttlewagon</p> <p>Model: SWX410</p> <p>Year:</p> <p>* Hour Meter: NA</p> <p>Serial No: RGS41026</p> <p>Engine: 6BT Cummins</p> <p>Transmission: Rebuilt</p> <p>Rail Wheels: Good</p> <p>Road Wheels: New</p>	<p>Options 1:</p> <p>Options 2:</p> <p>Options 3:</p> <p>Options 4:</p> <p>Options 5:</p> <p>Available: Immediately</p> <p>F.O.B.: Houston, TX</p> <p>Additional Pictures: Yes</p> <p>Asking Price: Call for pricing and availability</p>
---	--

Comments: The following items are new or remanufactured; Cab and hardware, new increased cab noise insulation package, new floor, two new cab doors with all new hardware, all new Solex windows and moulding, new vented engine covers w/handles and tie downs. All hydraulics rebuilt as required including all hydraulic cylinders rebuilt, new hydraulic hoses, hydraulic pump, hydraulic compressor motor, air compressor, new train-air angle cocks and train-air hoses, Couplers rebuilt as required including new I-bolts w/cushion blocks and new air release cylinders, new mirrors, new re-designed sanding tubes, reinforced railing system, new paint with OSHA, ANSI, and AAR/DOT compliant labeling-placards and reflectors, new batteries, new battery cables, alternator, starter, new rail/work lights and head lights, re-engineered system upgrades throughout the unit, new re-engineered break-a-way ladders with elevated safety-grab rails. Re-cored radiator, all new coolant hoses, new heater/defroster core-fan assembly, and much more. All systems operating within manufacturer's specifications. TRADE IN UNITS ACCEPTED!

*** Hour Meter Disclaimer:** Hour meter appears to be inaccurate based upon one or more of the following: field audit, maintenance record review, condition report, or physical verification.

Payment Terms: A valid sales tax "Exemption Certificate" must be submitted to Seller prior to the final sale and release of the unit. If not submitted all applicable sales tax will be invoiced and collected prior to release.

Warranties: This unit is sold "AS-IS, WHERE-IS" with no warranties implied or otherwise, subject to prior sale and availability, and in accordance with the terms and conditions set forth herein.

Transportation: Buyer is responsible for all transportation fees and applicable permitting costs. Buyer also assumes all responsibilities for any and all liability, and agrees to indemnify, defend, and hold harmless Seller for all losses or damages associated with the transportation of the unit including, but not limited to, loading, tie down, blocking, chalking, bracing, transporting, and unloading. Further, Buyer shall provide an escort vehicle when and where applicable, as well as provide for wide and/or oversize load signage, permitting, and/or similar when and where applicable. 48-hour notice required prior to pick up.



Drive train	Both axles rebuilt New ring, pinion, and bearings in both differentials All new universal joints New driveshafts and yoke assemblies Rebuilt Cummins 6BT diesel engine	New Rail wheels New tires New wheel seals as required
--------------------	--	---

Cab	New side and rear doors with all new hardware including hinges and latches, and handles New 6,000 psi door check straps with new footman loops NEW cab floor coated with rubberized rust inhibiting sealant Lower 31" exterior of cab was reinforced with new 12 gauge steel New cab front panel to accommodate new windows All new Solex (green tint) cab windows with all new gaskets and seals New custom made driver door sliding window New 30,000 BTU heater core with dual fan assembly New windshield washer and reservoir assembly New 1" thick perforated vinyl insulation New cab interior paint New steering wheel	
------------	---	--

Reengineered	New powder coated ladder assemblies with Griptread and reengineered break-away lower rung Ladders reengineered with 18" handle risers to improve operator's safety Reengineered sanding tubes system with new style powder coated sanding tubes Two new engine side panels with grates made of thicker steel for longer life	
---------------------	---	--

Electrical	Two beacons versus one (front & rear) for increased visibility and safety New work lights Rebuilt alternator New battery New battery cables Two new dome lights (front and rear) Two new defroster-circulation fans	
-------------------	---	--

Hydraulic	Remanufactured hydraulic pump All hydraulic cylinders rebuilt Numerous hydraulic hoses replaced Complete hydraulic system flush, new filters, and new hydraulic fluid	
------------------	--	--

Pneumatic	Remanufactured high-output hydraulically driven air compressor New hydraulically driven air compressor motor New pressure "pop off" valves	
------------------	--	--

Couplers	Rebuilt coupler receiver boxes New draft marshmallow/cushion blocks New forged coupler eye-bolts, castle nut, and shims New weld-in coupler frame bushings New 1.5" thick coupler crossbars	
-----------------	---	--

Additional

<p>New powder coated coupler mirrors frames with new 1/4" versus 1/8" mirror assemblies Entire unit sandblasted and painted with two-part epoxy paint system All new exterior placards, labels, reflectors, and warning signs Exterior deck painted with anti-slip material with black overlay Cab roof painted white to deflect heat New west coast side mirrors with yellow chevrons Fuel tank flushed and acid dipped to remove any impurities Rebuilt central lubrication system Rebuilt sander valves as necessary Drivers side cab ladder rebuilt and powder coated</p>	<p>Central lube system Block heater New train-air hoses and glad-hands New radiator hoses New radiator cap Re-cored radiator New master cylinder and brake booster</p>
---	--



Left side view



Right side view



Left front view



Right rear view



Left rear view



Right front view



Front center view



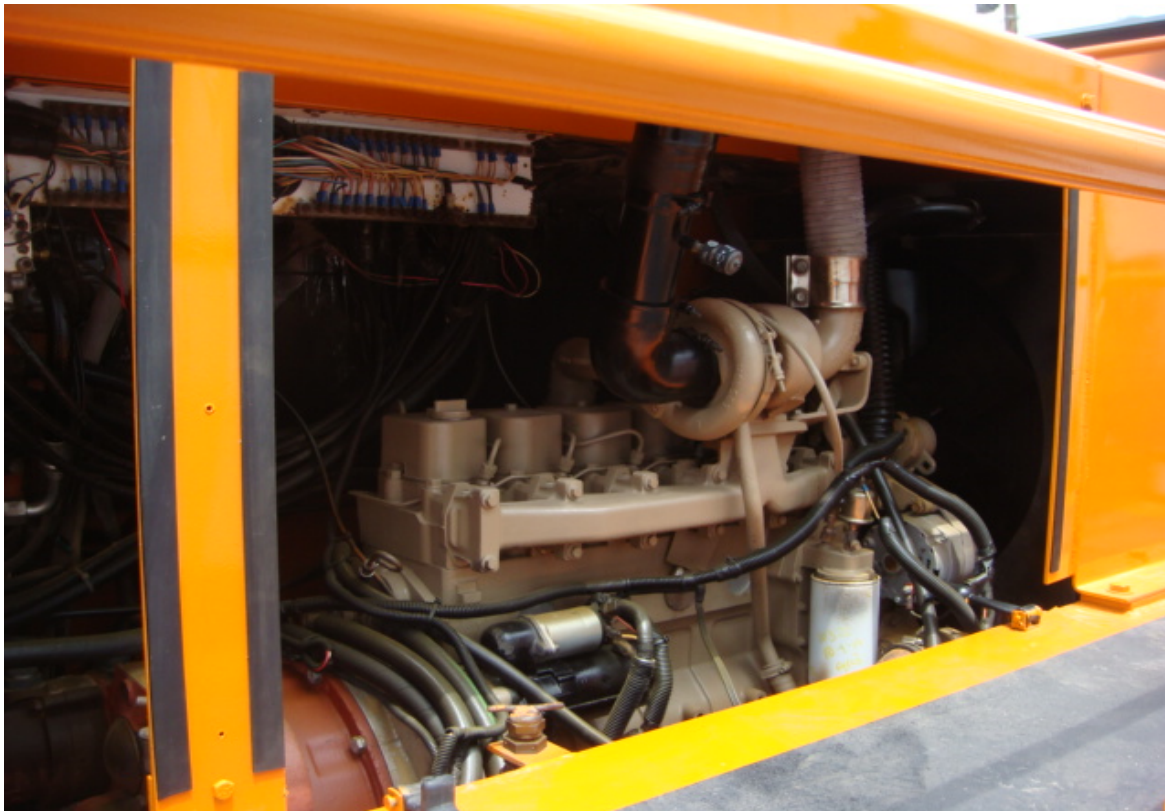
Rear center view



All new windows consisting of Solex (green tint) windows with all new two piece window gasket. New chevron fold away mirrors designed to retract at impact



New rear door with all new hardware and weather-stripping. Four inch railing "toe kick" installed to comply with OSHA standards. New powder coated ladders with 18 inch additional handrail risers for safer operation. Photo shows 31 inch additional 10 gauge overlay steel panel designed to stiffen cab and ensure longevity.



Rebuilt 6BT Cummins turbo with block heater



Remanufactured air compressor, compressor hydraulic motor, hydraulic pump



All new tires.
Photo also shows re-engineered powder coated sanding tube system



Hydraulic and fuel tank were removed and professionally flushed



Powder coated ladders with break away first step



Photo shows rebuilt coupler, new rail lights, new angle cock, new train-air hose with gladhand and AAR bunji. Several rail wheels are new.



Photo shows the inside of the coupler receiver box during remanufacturing. New cushion block, new cushion block 1 inch end plated (red), new 18 inch drop forged eyebolt with new castellated nut. New coupler box to frame pin bushing.



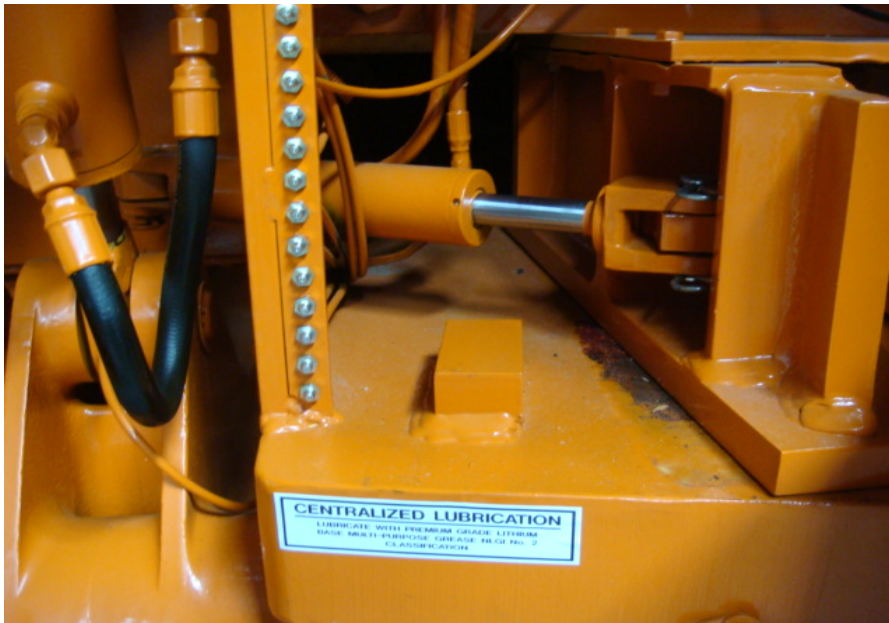
Photo show new operators door, hinge, handle, door check, coachman loops, one inch perforated vinyl insulation. New black anodized aluminum sliding door window.



New 10 gauge steel overlay floor coated with two party polymer coating with abrasive to help prevent operating slipping. New windshield wiper squirt reservoir, motor/pump, and hosing



All new cab insulation, dome lights, air windshield wipers, and air horn valve. New steering wheel.

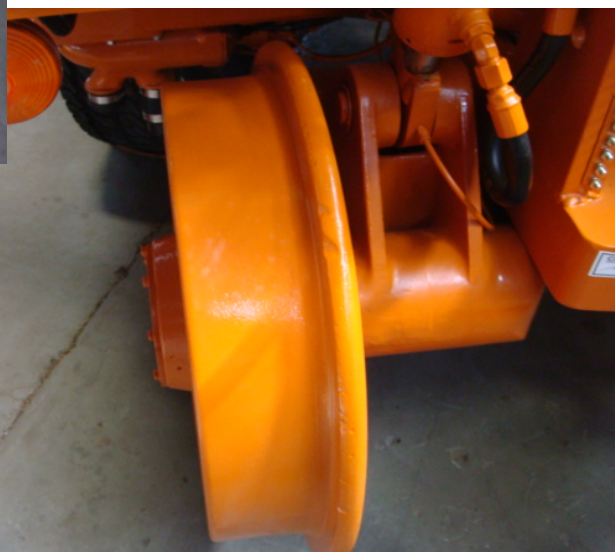


Front and rear central lubrication system

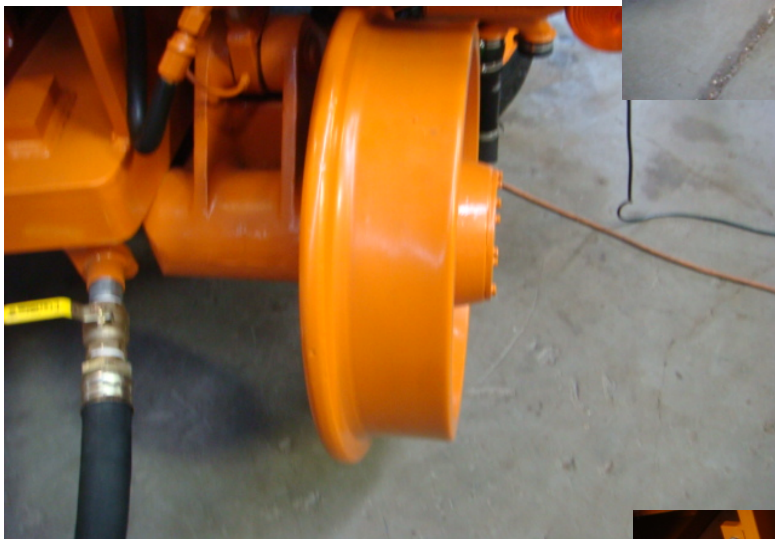




New LR rail wheel



New RF rail wheel



New LF rail wheel



New RR rail wheel