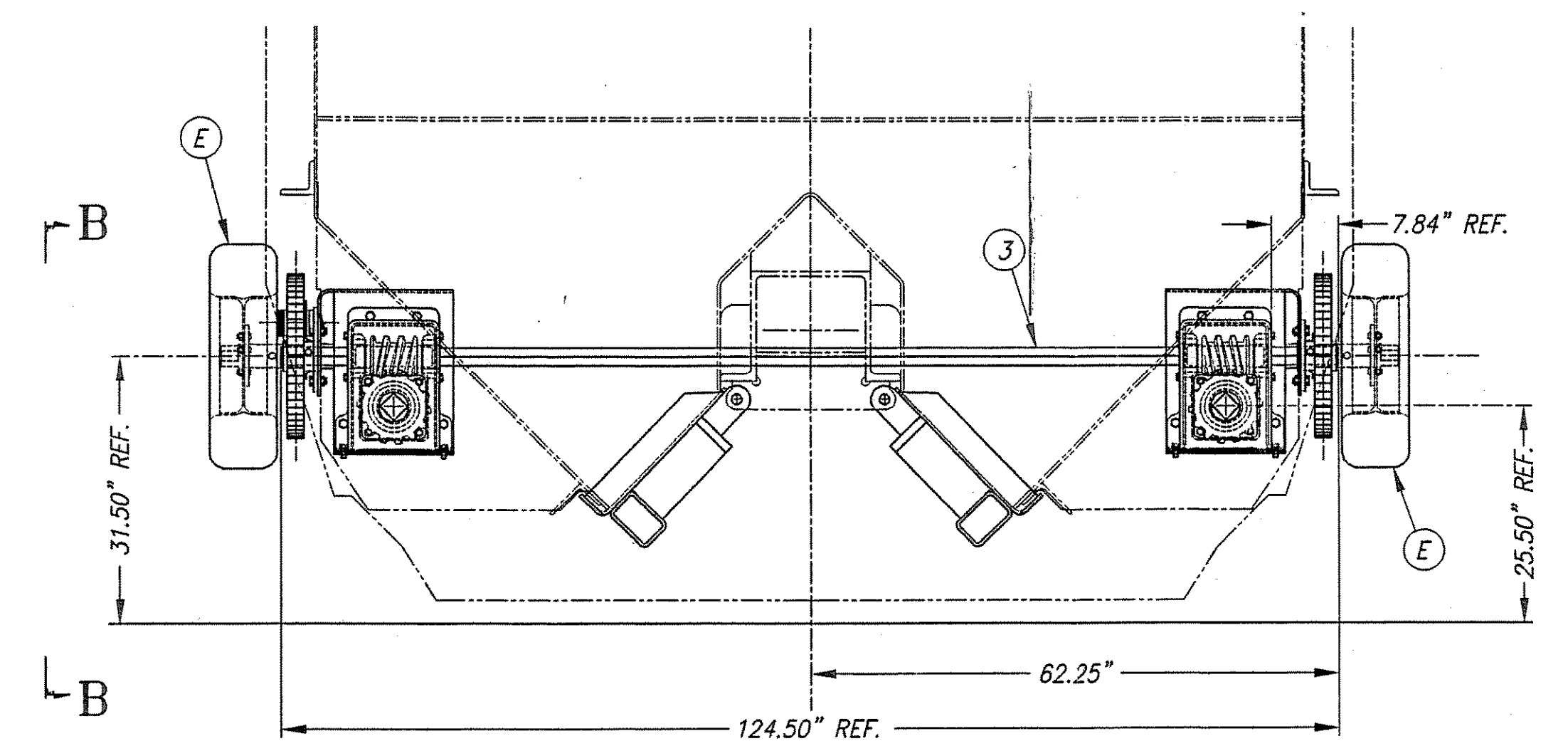


PURCHASED PARTS				
ITEM	I.D. NO.	QTY/ASSY	SIZE REMARKS	NAME
A	FABH-083	2	0.50"-13 x 4.25" GRD-5 PLN	BOLT-HEX
B	FANH-014	2	0.50"-13 TOPLOCK GRD-5 PLN	NUT-HEX
C	FABH-022	10	0.63"-11 x 1.50" GRD-5 PLN	BOLT-HEX
D	FANH-015	10	0.63"-11 TOPLOCK GRD-5 PLN	NUT-HEX
E	G90-S-00876	2	14x5.5x0 OFFSET/5-4.75 BOLT CIRCLE FT78-14 4 PLY BIAS TIRE	WHEEL-MOUNTED

ASSEMBLIES & DETAILS				
ITEM	I.D. NO.	QTY/ASSY	DESCRIPTION	
1	D-01452-G40	1	GEAR ASSEMBLY, RH	
2	D-01453-G41	1	GEAR ASSEMBLY, LH	
3	B-06051-135	1	GEAR WHEEL SHAFT	
4	D-01412-305	2	GEAR WHEEL	



SECTION A-A

REV.	DESCRIPTION

TOLERANCES UNLESS NOTED OTHERWISE
UNLESS OTHERWISE SPECIFIED ALL DIMENSIONS ARE IN INCHES

NEXT ASSEMBLY		DECIMALS XX = ± 0.13"
DATE	4-15-97	DECIMALS XXX = ±
HOLE DIA. = ±		ANGLES = ±
FINISH =		

MATERIAL: 250#

THIS DRAWING AND ALL COPIES THEREOF WHENEVER MADE ARE THE PROPERTY OF, AND ARE FURNISHED IN TRUST AND ON CONDITION OF EXCLUSIVE USE ONLY IN THE INTEREST OF, AND MAY BE RETURNED ONLY ON THE WRITTEN PERMISSION OF, AND RETURNABLE AT ANY TIME AT THE REQUEST OF,

FINLAY, OHIO

TITLE: **DRIVE MECHANISM ASSEMBLY**

DWG. NO. **D-01454-G30** REV.