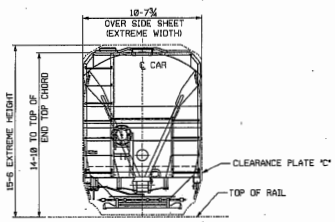
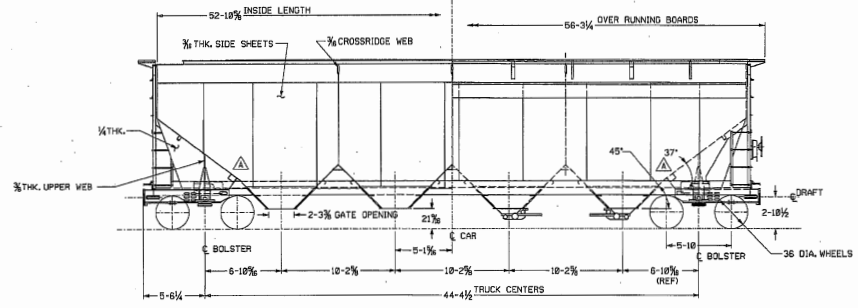
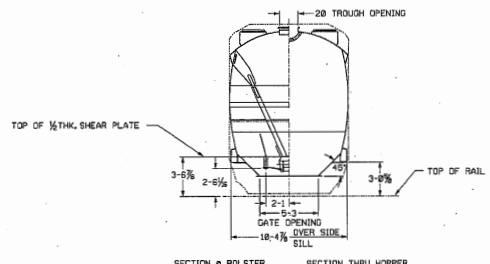
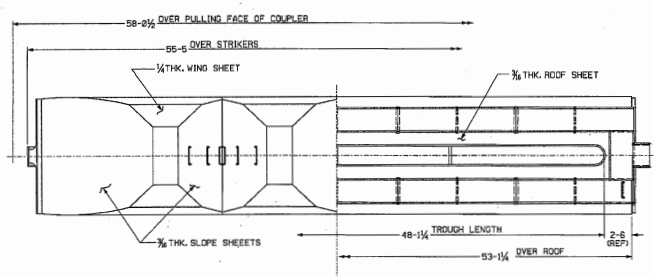


17 16 15 14 13 12 11 10 8 7 6 5 4 3 2 1

DESCRIPTION	QTY	DESIGN	DRG
SAFETY APPLIANCE (18"-END)	1	4A-001-430	
SAFETY APPLIANCE (24"-END)	1	4A-001-431	
RUNNING BOARD ARRANGEMENT	1	5A-001-01	
BRAKE ARRANGEMENT	1	5B-001-005	
GENERAL ASSEMBLY	1	5H-002-127	
STENCIL ARRANGEMENT	1	5M-003-093	
TRUCK ARRANGEMENT	2	41-001-018	
HATCH COVER ARRANGEMENT	1	5F-005-12	



CURVE DATA:
HORIZONTAL CURVE
 UNCOUPLED _____ 158 FT RADIUS
 COUPLED TO LINE CAR _____ 214 FT RADIUS
 COUPLED TO BASE CAR _____ 212 FT RADIUS

NOT TO SCALE
 THIS DRAWING IS A PRELIMINARY DESIGN. IT IS SUBJECT TO CHANGE WITHOUT NOTICE. THE MANUFACTURER ASSUMES NO LIABILITY FOR ANY DAMAGE OR INJURY CAUSED BY THE USE OF THIS DRAWING. THE USER SHALL BE RESPONSIBLE FOR OBTAINING ALL NECESSARY PERMITS AND APPROVALS. THE USER SHALL BE RESPONSIBLE FOR OBTAINING ALL NECESSARY PERMITS AND APPROVALS. THE USER SHALL BE RESPONSIBLE FOR OBTAINING ALL NECESSARY PERMITS AND APPROVALS.

TRINITY PARTS AND COMPONENTS, LLC
 CONFIDENTIAL / PROPRIETARY INFORMATION

DATE	DESCRIPTION OF REVISION	DATE	REV.

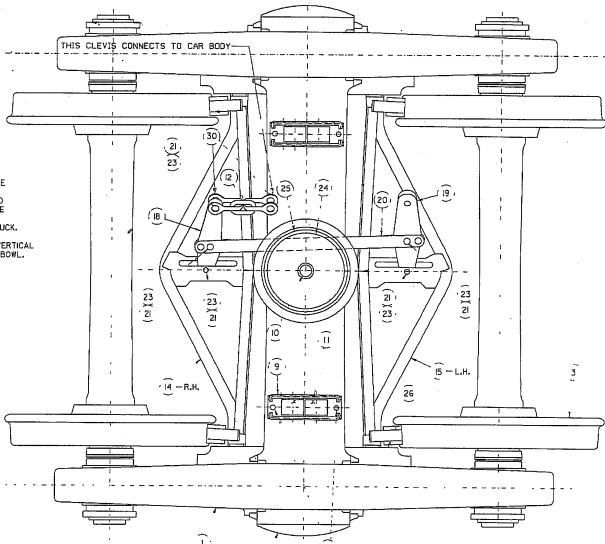
24X **Thrall Car** Objective Excellence

GENERAL ARRANGEMENT
 (5250 CU. FT. _____)

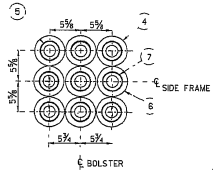
SCALE: 1/4" = 1 FT MATERIAL: _____
 DESIGNED BY: J.C. DATE: 7-8-93
 CHECKED BY: CTC DATE: 7-9-93 DRAWING NO.: _____
 ISSUED BY: NLA DATE: _____ 4M-001-538

Drawn by: TRINAC

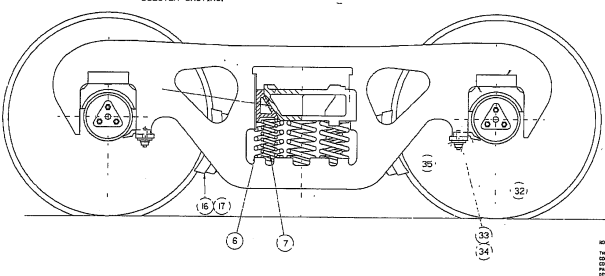
17 16 15 14 13 12 11 10 9 8 7 6 5 4 3 2 1



- NOTES:**
1. ALL TRUCK ASSEMBLIES ARE TO HAVE SIDE FRAMES MATCHED IN ACCORDANCE WITH PART MANUAL PAGE D-117. SIDE FRAMES IN EACH TRUCK ASSEMBLY TO BE MATCHED WITHIN ONE OF THE SAME NUMBER OF MATING BUTTON HEADS SELECTED FOR USE ON THE SAME TRUCK.
 2. APPLY JET-LUBE MP-50 (ITEM 27) TO VERTICAL WEAR SURFACE OF TRUCK BOLSTER SOWL.



- SPRING GROUP ARRANGEMENT**
- 7 AAR D-5 OUTER COIL SPRINGS (ITEM #4)
 - 7 AAR D-5 INNER COIL SPRINGS (ITEM #5)
 - 2 ASF SNUBBER OUTER COIL SPRINGS (ITEM #6)
 - 2 ASF SNUBBER INNER COIL SPRINGS (ITEM #7)



NOTES OF MANUFACTURER:

THE DRAWING INCLUDES SUBJECT MATTER IN WHICH TRADE OR MANUFACTURE RIGHTS ARE RESERVED. THESE RIGHTS APPLY TO THE DRAWING AND TO THE MANUFACTURE OF THE SUBJECT MATTER THEREIN. ANY REPRODUCTION OR TRANSMISSION OF THIS DRAWING OR THE SUBJECT MATTER THEREIN WITHOUT THE WRITTEN PERMISSION OF THE DRAWING OR THE SUBJECT MATTER THEREIN IS PROHIBITED.

DESCRIPTION	B/M PART NUMBER	QTY	VENDOR	VENDOR PART NUMBER	VENDOR DRG NUMBER	ITEM
TRUCK SIDE FRAME	TB00206	2	ASF	PATT #22368-C	76878-E	1
TRUCK BOLSTER	TA00039	1	ASF	PATT #22367-AS	77515	2
MOUNTED WHEEL SET (SEE TABLE)	TB00024	2	C.E. RAILCAR			3
OUTER SPRING	TI10008	14	LINDON SPRING	D-5, PG. D-170	M-112-C	4
INNER SPRING	TI10032	14	LINDON SPRING	D-5, PG. D-171		5
SNUBBER SPRING "OUTER"	TK03008	4	ASF	#5062	11-1-65062-3	6
SNUBBER SPRING "INNER"	TK04007	4	ASF	#5053	11-1-65053-8	7
SNUBBER SHOE	TK00000	4	ASF	PATT #17823	76706-K	8
SIDE BEARING CASE	TL00001	2	STUCKI	MODEL #888-B		9
KING PIN	UL28007	1	THRALL		1U-128-7	10
SIDE BEARING - ROLLER	TL00000	4	STUCKI	4" DIA. X 3" THK.	688-B	11
CONNECTING LINK	BJ28200	1		3/8" X 1 1/2" X 3/4"		112
BOLT - TORX OVAL HEAD	CD00008	4	CANCAR	734-28086-140		13
BRAKE BEAM, R.H.	T000008R	1	TRANTEK	1124-5		14
BRAKE BEAM, L.H.	T000008L	1	TRANTEK	1124-5		15
BRAKE SHOE KEY	TS00000	4	KING RAIL	RAK S-375-79	BC-7443-B	16
BRAKE SHOE	TS00056 B/M	4				17
LEVER	TC00036	1	SCHAEFER		3682	18
LIVE LEVER	TC00035	1	SCHAEFER		3651	19
BOTTOM CONNECTION	TI100006	1	SCHAEFER		1201-370-E	20
COTTER (LOCKWIRE)	CD00007	5	GUSTIN BACON	3/8" DIA. X 3 LG.	37-00012	21
ROLLER BEARING ADAPTER	TI000259	4	ADVANCED CAST	5/8" X 12 INCT.		22
BRAKE PIN	BP00005	5	E.C. INDUSTRIES	6209	1 1/2" DIA X 3 LG.	23
CENTER PLATE LUB	T000002	1	MODERN TRANS.	L-278, LUB-DISK		24
HORIZONTAL WEAR LINER	TE0005 B/M	1		3/4" THK X 15K DIA. C. 913-C, L-2		25
BRAKE BEAM WEAR PLATE	TW00003	4	BUFFALO	SPRING STL.	UN-118-H	26
CENTER PLATE LUB	T000004	4	MID-STATE	JET-LUB MP-50		27
INSTR. TORX FLANGE LOCKNUT	LO00008	4	CANCAR	754-28086-831		28
PEDESTAL WEAR PLATE	TW00004A	4	TRANSVONE	NO DIMES	A-8548	29
BRAKE CLEVIS	BF100068	2	SCHAEFER	3 X 1 1/2" 20° RH TWIST	1264	30
SOLE, SLOPE POCKET LUBE	ML100013	2	MID-STATE	JET-LUBE MOLY-MBT SPRAY		31
ROLLER BRG. RETAINER FRAME KEY	T000003	4	SCHAEFER		366-A	32
MUCKBOLT - 3/4" DIA.	CA100018	4		CB0LR-BR24-24		33
SHOCK COLLAR - 3/4" DIA.	CA200003	4		LC-20R2G		34
HARDENED FLAT WASHER	CF00001	4		3/4" DIA. WASHW	TYPE "B"	35

WHEEL SET COMPONENTS

DESCRIPTION	B/M PART NUMBER	VENDOR	VENDOR PART NUMBER	VENDOR DRG NUMBER
WHEELS	TF100001	GRIFFIN	30" 36" CLASS "C"	F-143E
AXLE	TF100001	STANDARD STL	PLG-C-173	BB 1/2 X 12
BEARINGS	TF100003A	TRAKEN	CLASS "F"	E-3153-C, L-5

THIRLL PARTS AND COMPONENTS, LLC
 CONFIDENTIAL INFORMATION

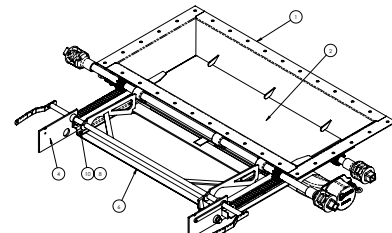
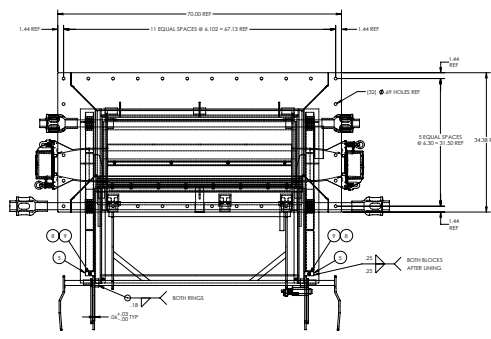
CTCT: REVISED ITEM 13, WAS SPLIT ITEM. 13-3-93. MM
 ITEM 8, QTY WAS 12, ITEM 16, PATT #22367-AS, TRANSMISSION ADDED ITEM 16, 3-3-93. J.G.
 CTCT: 13-3-93. J.G.
 CTCT: 13-3-93. J.G.
 CTCT: 13-3-93. J.G.
 CTCT: 13-3-93. J.G.

TRUCK OTHERWISE NOTED DIMENSIONS ARE IN INCHES UNLESS OTHERWISE NOTED. WEIGHT IS IN POUNDS.

24X THIRLL GEAR MANUFACTURING CO.

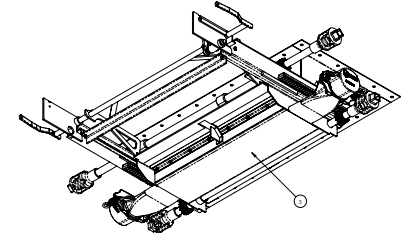
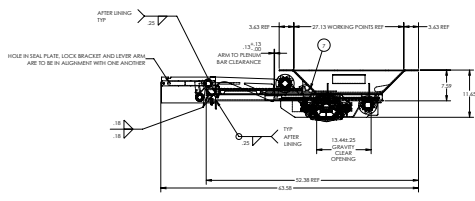
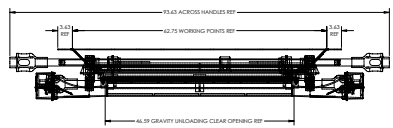
TRUCK ARRANGEMENT (ASF "RIDEMASTER")

SCALE: 1/2" IN = 1 FT MATERIAL: H
 DWG BY: MWM DATE: 7-14-93
 CHK BY: CTC DATE: 7-16-93
 DRAWN: TTI, NAL, M-001 4T-001-510



TOP OF GATE

ITEM	QTY	PART NUMBER	DESCRIPTION	DRAWING NUMBER
1	1	MKE1040	GRAVAC FRAME ASSEMBLY	M-59-32
2	1	MKE10474	SLIDE DOOR ASSEMBLY	M-59-18
3	1	MKE10439	PLENUM CHAMBER ASSY	M-59-33
4	1	P10395207	ARM ASSEMBLY	M-150-7
5	2	P8810005	STOP BLOCK	M-38-17
6	1	P8810008	SUPPORT	M-38-20
7	1	MKE7702	DOOR SEAL	30275
8	4	P3000412	3/8-16 NYLON NUT ZN	P3000412
9	2	P3000419	3/8-16 X 2-3/4 LG HHCS	P3000419
10	2	P3000405	3/8-16 X 1-1/4 LG HHCS	P3000405



BOTTOM OF GATE

THIS DRAWING IS THE PROPERTY OF WEAER INCORPORATED. IT IS TO BE USED ONLY FOR THE PURPOSES SPECIFIED HEREIN. IT IS NOT TO BE REPRODUCED OR TRANSMITTED IN ANY FORM OR BY ANY MEANS, ELECTRONIC OR MECHANICAL, INCLUDING PHOTOCOPYING, RECORDING, OR BY ANY INFORMATION STORAGE AND RETRIEVAL SYSTEM, WITHOUT THE WRITTEN PERMISSION OF WEAER INCORPORATED.

W. H. MINER DIVISION
 13 X 47 GRAVAC
 32 BOLT HOLE ARRANGEMENT

DATE: 08/11/03
 DRAWN BY: J. H. BROWN
 CHECKED BY: J. H. BROWN
 APPROVED BY: J. H. BROWN

ITEM NO: MKE10438
 DRAWING NO: M-59-31