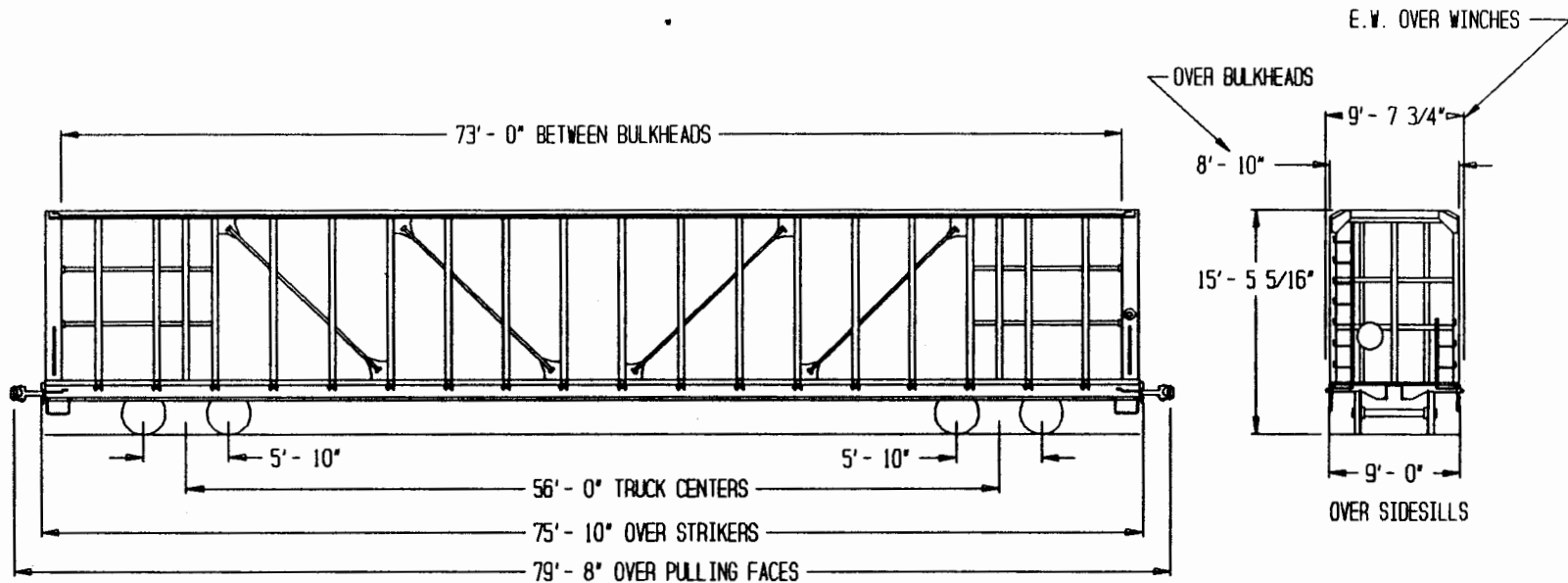


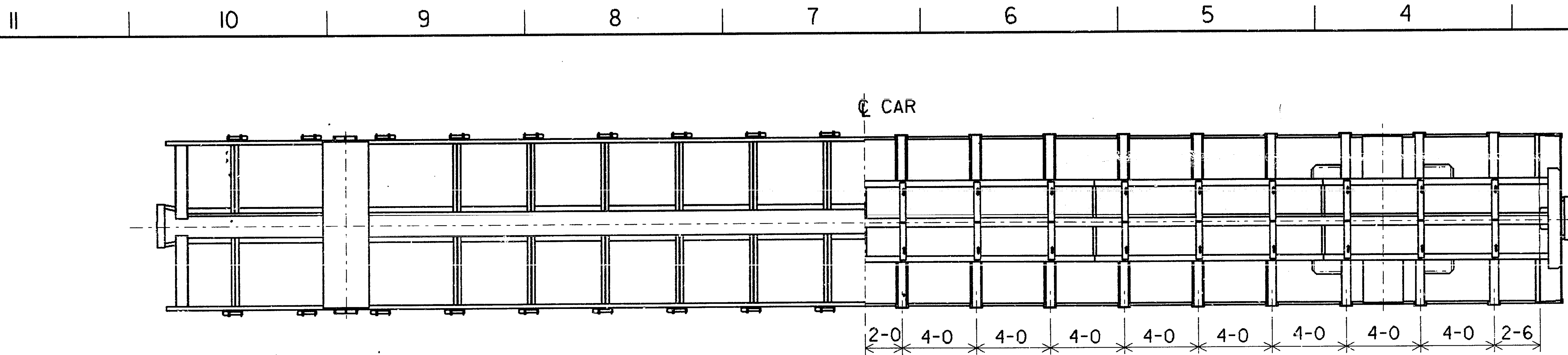
100 TON FBS FLATCAR  
CENTER BEAM, BULKHEAD

ITEL RAIL CORPORATION

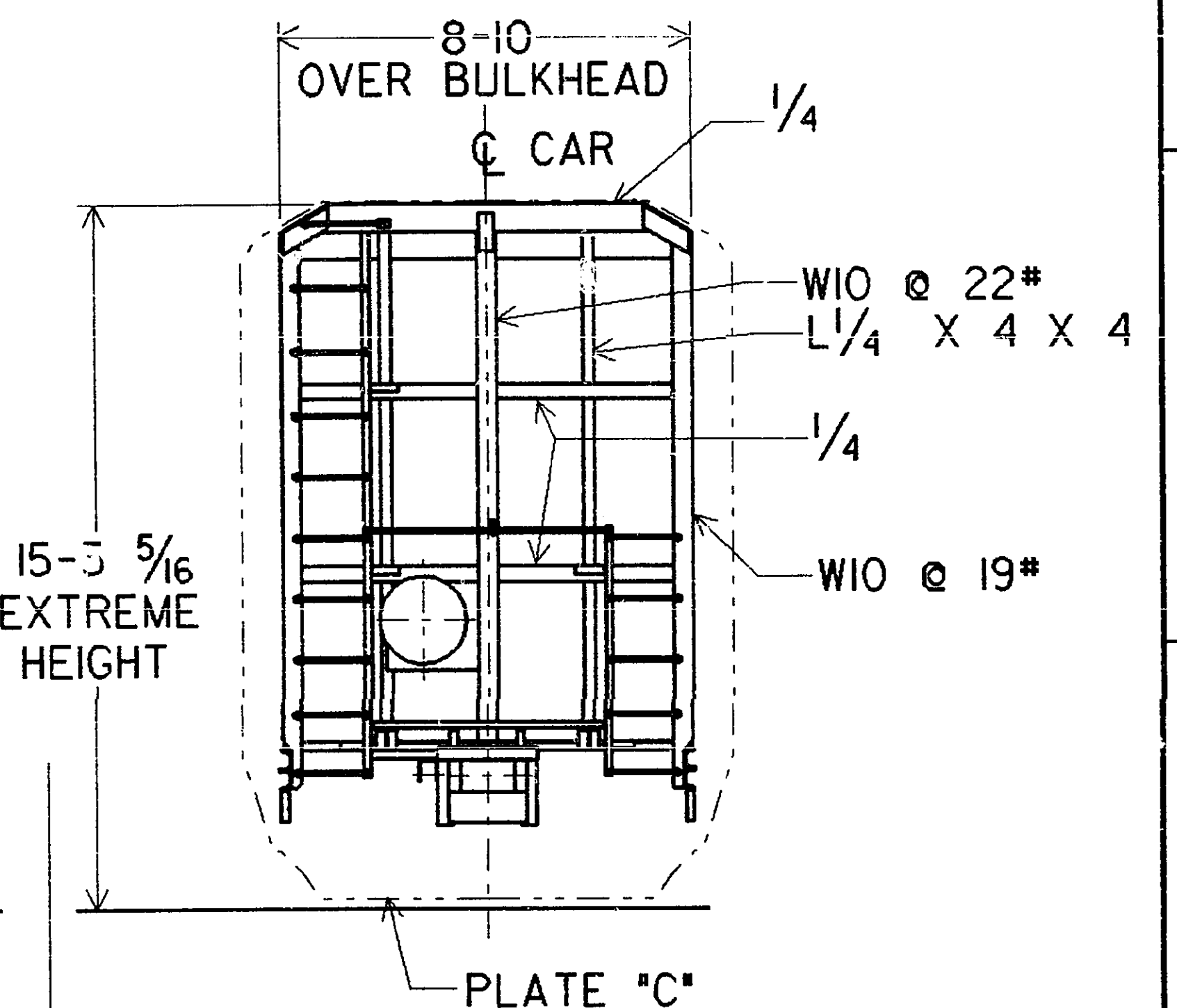
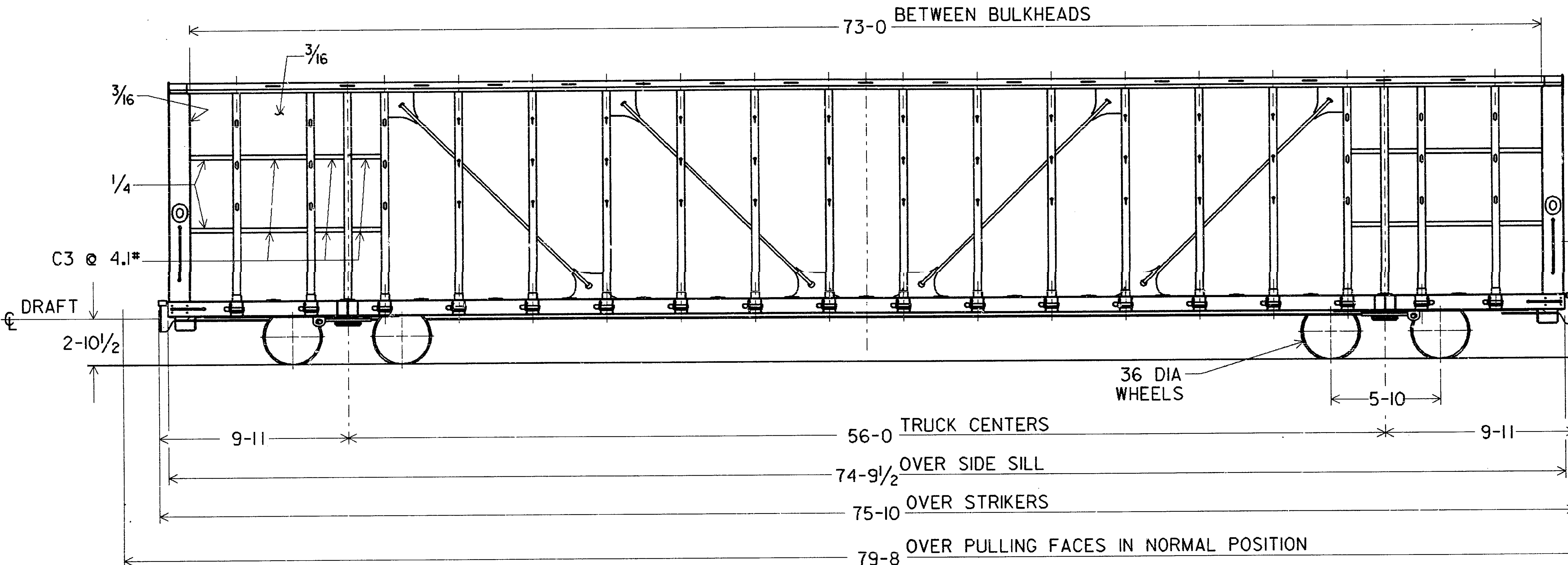
MANUFACTURER LOT NUMBER  
THRALL 509



GENERAL DATA		CAR BODY DATA		TRUCK DATA		MISCELLANEOUS	
BUILDER -	THRALL 509	BRAKE VALVE -	ABOV CYL. - 8 1/2" x 12"	TRUCK TYPE -	BARBER S-2-C	ORIGINAL CAR SERIES: MR 9100 - 9279	
BUILT DATE -	10/88	LOAD/EMPTY VALVE -	NONE	JOURNAL -	6 1/2" x 12" ROLLER BEARINGS	TOE 4500 - 4524	
AAR CTC -	F383	COUPLER -	SBE68BE	WHEELS -	H 36C 1-W	TOE 8000 - 8074	
CLEARANCE -	C	CUSHION UNIT -	KEYSTONE F-10GR	BRAKE SHOES -	2" H-F COMP	TSE 6001 - 6020	
AVG. LT. WT. -	64,500 #	CENTER PLATE -	16" DRESSER LOW PROFILE	BRAKE BEAMS -	AAR #18		
CUBIC CAPY. -	N/A	FLOOR -	1/8" A36 STEEL	SNUBBING -	STANDARD	ORIGINAL OWNER: ITEL	
GEN. ARRGT. DWG. -	3M-001-294			SPRINGS -	DS. 28-DC, 24-IC		
BRAKE ARRGT. DWG. -	58-001-314			SIDE BRG -	MINER TCC-100	LOADING EQUIPMENT: 36- 3/8" CABLE TIEDOWNS	
CENTER OF GRAVITY EMPTY -	N/A					36 LADING ANCHORS	
MIN. CURVE UNCOUPLED -	180'						
						NEW ISSUE: 9/24/90 PJW	

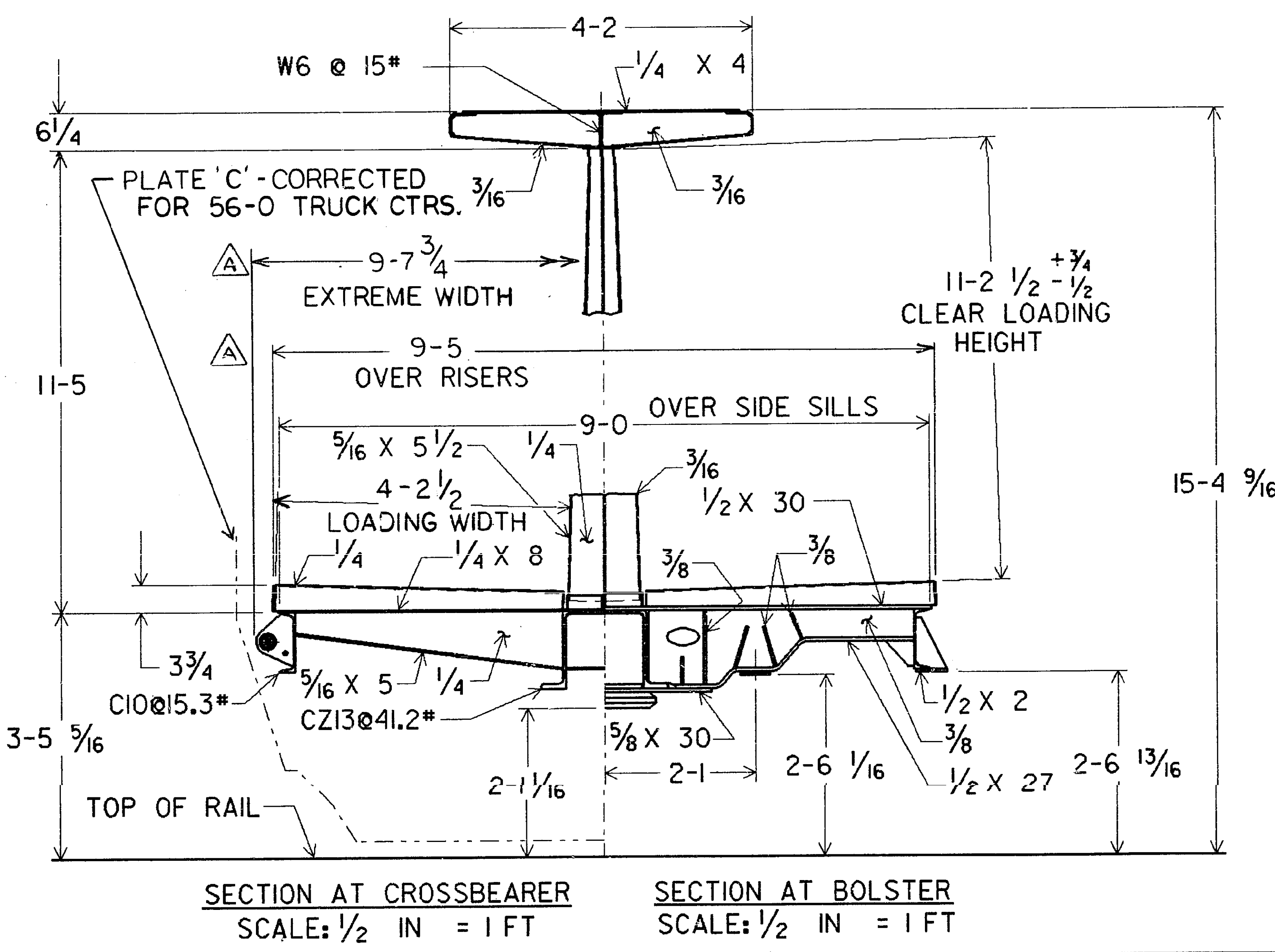


DESCRIPTION	DESIGN	DRG
SAFETY APPLIANCE ARRGT.	5A-001-265	
BRAKE ARRANGEMENT	5B-001-314	
GENERAL ASSEMBLY	5M-002-398	
STENCIL ARRANGEMENT 100%	5M-003-398	
TRUCK ARRANGEMENT 100%	4T-001-305	
TRUCK ARRANGEMENT 200%	4T-001-306	



CURVE DATA

UNCOUPLED	180 FT R
COUPLED TO LIKE CAR	215 FT R
COUPLED TO BASE CAR	215 FT R



NOTICE OF PROPRIETARY RIGHTS  
 THIS DOCUMENT DISCLOSES SUBJECT MATTER IN WHICH THRALL CAR MANUFACTURING COMPANY HAS PROPRIETARY RIGHTS. NEITHER RECEIPT NOR POSSESSION THEREOF CONFERS OR TRANSFERS ANY RIGHT TO REPRODUCE OR DISCLOSE THE DOCUMENT, ANY PART THEREOF, ANY INFORMATION CONTAINED THEREIN OR ANY PHYSICAL ARTICLE OR DEVICE, OR TO PRACTICE ANY METHOD OR PROCESS EXCEPT BY WRITTEN PERMISSION FROM THRALL CAR MANUFACTURING COMPANY.

UNLESS OTHERWISE NOTED  
 DIMENSIONS ± 1/8"  
 ANGLES ± 1°  
 HOLE DIAMETERS ± 1/32"

ZONE	CHKD BY	DESCRIPTION OF REVISION	DATE	REV. BY	REV.
TJ	ADDED EXT. WIDTH, 215 RWAS 185; 9'5 WAS 4'8"	8-25-88	TJ	A	
*16X					

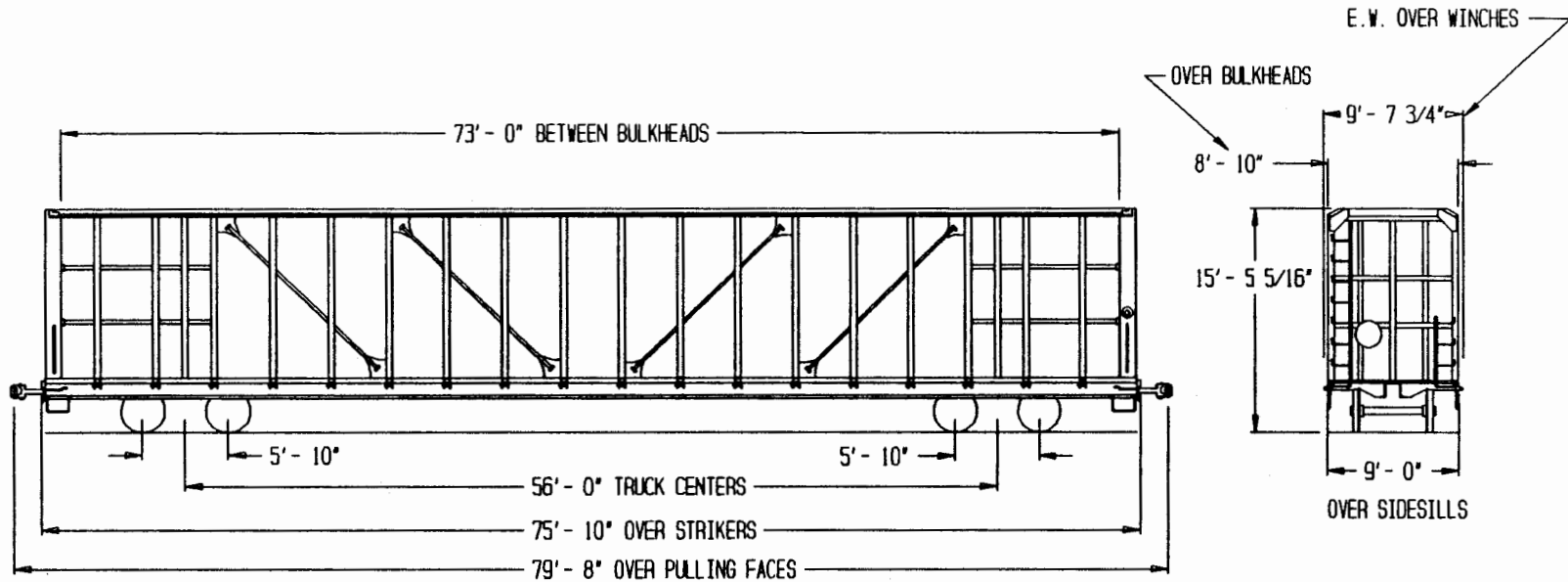
GENERAL ARRANGEMENT  
 (73 FT LIGHT-WEIGHT CENTER BEAM CAR)

SCALE: 3/16 IN = 1 FT	MATERIAL:
DRG BY: Jorqie DATE: 7-28-88	
CHK BY: TJ DATE: 7-28-88	DRAWING NO.
ISSUED: 7-29-88 NLA:	3M-001-294

100 TON FBS FLATCAR  
CENTER BEAM, BULKHEAD

ITEL RAIL CORPORATION

MANUFACTURER LOT NUMBER  
THRALL 577



GENERAL DATA		CAR BODY DATA		TRUCK DATA		MISCELLANEOUS	
BUILDER -	THRALL 577	BRAKE VALVE -	ABDW CYL. - 8 1/2" x 12"	TRUCK TYPE -	BARBER S-2-C	ORIGINAL CAR SERIES: MR 30000 - 30149	
BUILT DATE -	8 - 10/89	LOAD/EMPTY VALVE -	NONE	JOURNAL -	6 1/2" x 12" ROLLER BEARINGS		
AAR CTC -	F383	COUPLER -	SBE688E	WHEELS -	H 36C 1-W	ORIGINAL OWNER: ITEL	
CLEARANCE -	C	CUSHION UNIT -	10" EDC FM & KEYSTONE	BRAKE SHOES -	2" H-F COMP		
AVG. LT. WT. -	64,500 #	CENTER PLATE -	16" DRESSER LOW PROFILE	BRAKE BEAMS -	AAR #18	LOADING EQUIPMENT: 36- 3/8" CABLE TIEDOWNS	
CUBIC CAPY. -	N/A	FLOOR -	1/8" A36 STEEL	SNUBBING -	STANDARD	36 LADING ANCHORS	
GEN. ARRGT. DWG. -	3M-001-294			SPRINGS -	05, 28-OC, 24-IC		
BRAKE ARRGT. DWG. -	5B-001-382			SIDE BRG -	MINER TCC-100		
CENTER OF GRAVITY EMPTY -	N/A						
MIN. CURVE UNCOUPLED -	180'						
						NEW ISSUE: 9/24/90 PJW	