

REVISION  
 REV. "A", 7-17-90, ORDER 3400-610  
 ADDED CAR NO. STENCIL e "BL" & "AR" CORNERS.

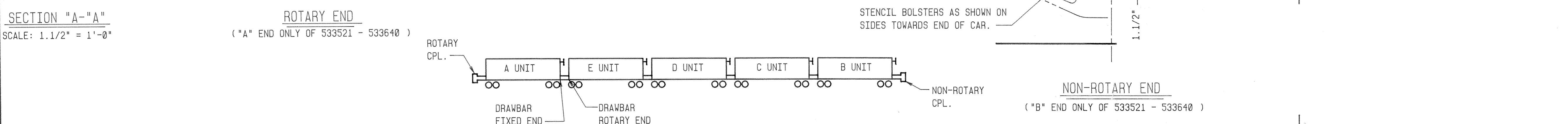
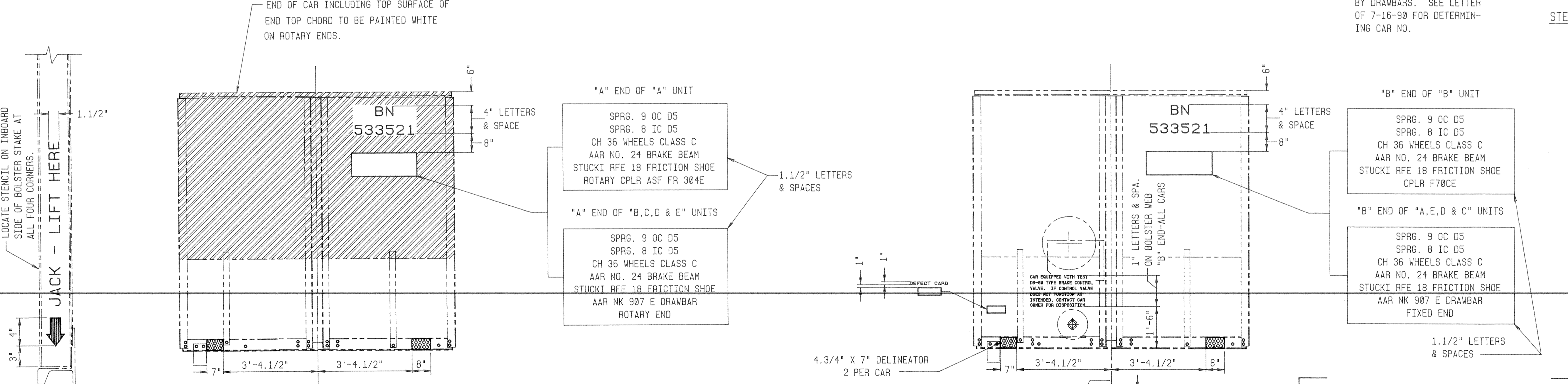
THIS AREA ON BOTH SIDES OF CAR INCLUDING TOP SURFACE OF SIDE TOP CHORD TO BE PAINTED WHITE ON ROTARY ENDS.  
 THIS AREA INCLUDING THREE ENTIRE SIDE STAKES TO BE PAINTED GREEN WITH WHITE STENCILING.  
 THIS AREA INCLUDING TWO ENTIRE SIDE STAKES TO BE PAINTED GREEN WITH WHITE STENCILING.  
 TRUST STENCIL "BL" & "AR" CORNERS 1" LETTERS & SPACES  
 SUBJECT TO A SECURITY AGREEMENT RECORDED WITH THE INTERSTATE COMMERCE COMMISSION

1" LETTERS "AL" CORNER ONLY  
 4.3/4" X 8" DELINEATOR "AL" & "BR" CORNERS  
 ROUTE CARD BOARD BRACKET "BR" AND "AL" CORNERS DRAWING B-75218  
 7 DELINEATORS ON EACH SIDE & TWO ON EACH END. TOTAL 18 PER CAR. DELINEATORS ARE 4.3/4" X 8" EXCEPT AS NOTED. MATERIAL TO BE SCOTCHLITE No. 5870 PREMASKED.  
 STAMP REPORTING MARKS & ROAD NUMBERS ON "BL" CORNER OF CTR. SILL. USE 1/2" MIN. STEEL DIE STAMP.  
 4.3/4" X 7" DELINEATOR "BL" & "AR" CORNERS 2 PER CAR  
 SIDE FRAME STENCILING 1.1/2" LETTERS ON OUTSIDE OF FRAME.  
 1.1/2" LETTERS & NUMBERS "BL" & "AR" CORNERS THIS CAR NO. IS SAME FOR ALL FIVE UNITS CONNECTED BY DRAWBARS. SEE LETTER OF 7-16-90 FOR DETERMINING CAR NO.

NOTES:  
**PAINTING**  
 UNDERFRAME & ALL STEEL PARTS - BLACK  
 ROTARY END - WHITE  
 THREE PANELS PER SIDE AS SHOWN - GREEN  
 REMAINDER OF ALUMINUM - UNPAINTED

**STENCILING**  
 1. BLACK LETTERS ON WHITE ENDS  
 2. WHITE LETTERS ON GREEN AREA OF SIDES  
 3. WHITE LETTERS ON GREEN BACKGROUND ON UNPAINTED ALUMINUM  
 4. WHITE LETTERS ON BLACK STEEL UNDERFRAME  
 5. CONSOLIDATED STENCIL - WHITE LETTERS ON BLACK BACKGROUND

LOAD LIMIT IS THE DIFFERENCE BETWEEN 263,000 LBS. AND LIGHTWEIGHT OF CAR. THE LIGHTWEIGHT SHALL BE THE MULTIPLE OF 100 LBS. NEAREST THE SCALE WEIGHT. WHEN SCALE WEIGHT INDICATES AN EVEN 50 LBS., THE LOWER MULTIPLE IS USED.



REQ'N & ITEM	3400-610	533521 - 533640	120
ORDER NO.		SERIES NO.'s	NO. IN ORDER-CARS

<b>BETHLEHEM STEEL CORP.</b>	
FREIGHT CAR DIVISION	
ENGINEERING DEPT. JOHNSTOWN, PA.	
<b>STENCIL ARRANGEMENT</b>	
CORRECT:	MADE BY: A.T.K.
APPROVED:	DATE: 6-21-90
SCALE: 1/2" = 1'-0" UNLESS NOTED	DRAWING NO.
ISSUE	A
<b>D-80316</b>	