

Rail Maintenance Equipment

UTILITY TAMPER

SEPTEMBER 2017

UTILITY TAMPER PLASSER & THEURER UNIMAT JUNIOR

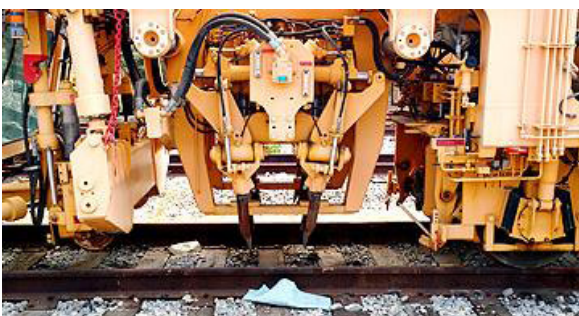
Serial #	2889	2890	2891
• Hours	327	201	50
• Operating Conditions	<ul style="list-style-type: none"> Missing electronic card (doesn't turn on) 	<ul style="list-style-type: none"> No current in starter system (doesn't turn on) 	<ul style="list-style-type: none"> Missing motor starter Missing fork rod from lift cylinder Missing various emergency stop buttons Missing air valve Missing air system tubing Missing starter system for air conditioner Missing cabin Lights Missing hoses from the upper part Missing pressure gauge

* Shipped in Puerto Bolívar or truck in Cerrejón, Colombia

GENERAL SPECIFICATIONS

• Operational Status	Operating
• Trademark	Plasser & Theurer
• Model	Unimat Junior
• Year	2012

Plasser & Theurer



GENERAL INFORMATION

• Function	Compresses the ballast under the ties.
• Engine	<ul style="list-style-type: none"> Water-cooled Caterpillar diesel engine. Type C7 - Output: 108kW (229HP)
• Power Transmission - Drive and Work	Hydrostatic drive through hydraulic motor and axle gear acting on the rear axle. For transfer the machine is controlled from the cabin.
• Maximum Driving Speed	<ul style="list-style-type: none"> Self-propelled: 65 km/h infinitely adjustable Hauled: 65 km/h
• Brakes	<ul style="list-style-type: none"> Pneumatically operated spring loaded block brakes, acting on all wheels, one block per wheel. Operated by manually controlled valve
• Hydraulic System	<ul style="list-style-type: none"> Hydraulic pumps to provide the required oil pressure for the drive and the working units. Special cooling circuit with large oil cooler and thermostat maintains a constant operating temperature.
• Power Supply	<ul style="list-style-type: none"> Three phase generators (alternators) branched in parallel, driven by the diesel engine. Two 12-V batteries in series, 200 Ah
• Cabin	<ul style="list-style-type: none"> Large sound insulated safety glass windows. Contains all controls for work and transfer drive clearly arranged. Ergonomic requirements, air conditioning, fire extinguisher

TECHNICAL SPECIFICATION

• Gauge	1,435 mm.
• Length Over Buffer Bars	10,700 mm.
• Height (Incl. Air Conditioning)	3,710 mm.
• Width	3,000 mm.
• Axle Wheel Base	6,500 mm.
• Wheel Diameter	730 mm.
• Weight approx.	26 t

