

Serial #: RCM12676



Inspection Details	
Year	2018
Make	Rail King
Model	RK330
Serial Number	RCM12676
Type	Railcar Mover
Inspection Date	09/27/2021
Location of Business	999 Solon Rd, Waxahachie, TX, 75165, USA
Attachment(s)/Accessory(s)	None
Enclosed Cab	Yes
Engine MFR	Not Available
Controls	Standard
Hours	1548
Cab A-C	No
Cab Heat	No
Backup Camera	Yes

Serial #: RCM12676

Inspection Details Cont'd	
Visual Inspection	Good Condition
Operational Test	Operational
Front Right Tire Condition	Cut - See Notes
Front Right Tire Brand	Goodyear
Front Right Tire Part Number	W7H82018
Front Right Tire Tread Depth	11/32"
Front Right Tire Tread Depth Percentage	34%
Back Right Tire Condition	Good Condition
Back Right Tire Brand	Goodyear
Back Right Tire Part Number	W7H83218
Back Right Tire Tread Depth	21/32"
Back Right Tire Tread Depth Percentage	66%
Front Left Tire Condition	Cut - See Notes
Front Left Tire Brand	Goodyear
Front Left Tire Part Number	W7H83218
Front Left Tire Tread Depth	14/32"
Front Left Tire Tread Depth Percentage	43%
Back Left Tire Condition	Good Condition
Back Left Tire Brand	Goodyear
Back Left Tire Part Number	W7H83218
Back Left Tire Tread Depth	21/32"
Back Left Tire Tread Depth Percentage	66%
Front Right Wheel Axle	Good Condition
Back Right Wheel Axle	Good Condition
Front Left Wheel Axle	Good Condition
Back Left Wheel Axle	Good Condition
Left Drive Hub	Good Condition
Right Drive Hub	Good Condition
Left Side Lift Cylinder	Good Condition
Right Side Lift Cylinder	Good Condition
Front Coupler Lift Cylinder	Good Condition
Rear Coupler Lift Cylinder	Good Condition
Tailgate Lights	Non Operational
Working Lights	Good Condition
Cab Door	Good Condition
Cab Glass	Good Condition
Side Glass Complete	Yes
Left Seat	Good Condition
Right Seat	Good Condition
Controls	Good Condition

Inspection Details Cont'd	
Mufflers	Good Condition
Intake Screen	Good Condition
Interior	Good Condition
Engine Compartment	Clean
Customer Decals Visible on Unit	No
Comments	The right side tailgate lights are non operational. Low Engine Oil Pressure. Low Air Pressure. Front right tire cut and gouged. Front left tire cut and gouged.



Front Left / 09-27-2021



Front Right / 09-27-2021



Left / Rear / 09-27-2021



Left / Seat / 09-27-2021



Right / Seat / 09-27-2021



RCM12676 / Serial # / VIN # / 09-27-2021



Right / Rear / 09-27-2021



Front Glass / 09-27-2021



Left ROPS / 09-27-2021



ROPS Condition / 09-27-2021



Rear and Top Window / 09-27-2021



Front Hydraulic Coupler / 09-29-2021



Rear Hydraulic Coupler / 09-27-2021



Left Stairs / 09-27-2021



Right Stairs / 09-27-2021



Left / Lift Cylinders / 09-27-2021



Right / Lift Cylinders / 09-27-2021



Front Right Tire Condition / 09-27-2021



Front Right Tire Brand / Front Right Tire Part Number / 09-27-2021



Front Right Tire Tread Depth / 09-27-2021



Front Right Wheel Axle / 09-27-2021



Front Right Drive Hub / 09-27-2021



Back Right Tire Condition / 09-27-2021



Back Right Tire Brand / 09-29-2021



Back Right Tire Part Number / 09-29-2021



Back Right Tire Tread Depth / 09-29-2021



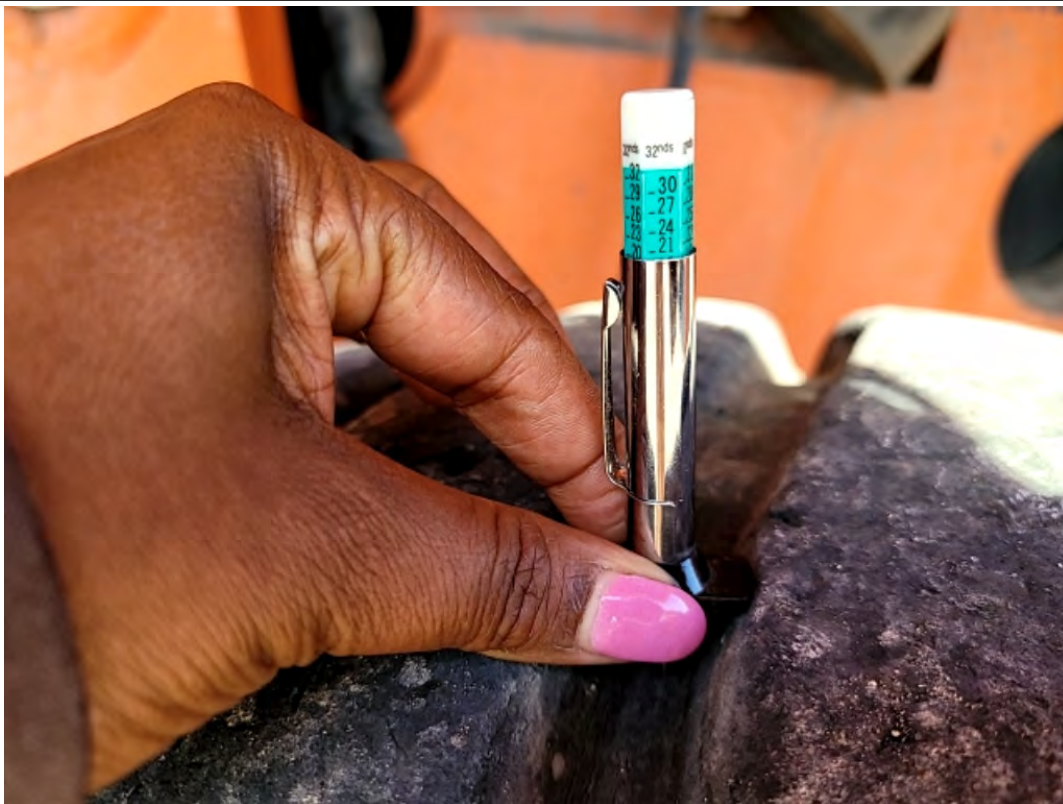
Back Right Wheel Axle / 09-27-2021



Back Left Tire Condition / 09-27-2021



Back Left Tire Brand / Back Left Tire Part Number / 09-27-2021



Back Left Tire Tread Depth / 09-27-2021



Back Left Wheel Axle / 09-27-2021



Front Left Tire Condition / 09-27-2021



Front Left Tire Brand / Front Left Tire Part Number / 09-27-2021



Front Left Tire Tread Depth / 09-27-2021



Front Left Wheel Axle / 09-27-2021



Front Left Drive Hub / 09-27-2021



Steering Wheel / 09-27-2021



Left Control / 09-27-2021



Left / Pedals / 09-27-2021



Controls / 09-27-2021



Controls / 09-27-2021



Controls / 09-29-2021



None / Keyless Start / 09-29-2021



1548 / Hours / 09-27-2021



Low Engine Oil Press/Low Air Pressure / Active Warnings / 09-29-2021



Right / Pedals / 09-27-2021



Right Control / 09-27-2021



Cab Lights / Interior / 09-27-2021



Cab Fan / Interior / 09-27-2021



Backup Camera / 09-27-2021



Left Cab Glass / Interior / 09-27-2021



Front Cab Glass / Interior / 09-27-2021



Rear Glass/Right Cab Glass / Interior / 09-27-2021



Front Glass/Cab / Interior / 09-27-2021



Rear and Top Window / Interior / 09-27-2021



Cab Door / 09-27-2021



Pre-Cleaner Bowl / 09-27-2021



Engine Compartment / Intake Screen / 09-28-2021



Engine Compartment / 09-28-2021



Intake Screen / Backup Camera / 09-27-2021



Muffler / 09-27-2021



Working Lights / 09-29-2021



Tailgate Lights / 09-29-2021