



Photo No. 1: Rear of Titan Trackmobile; fire damage to cab



Photo No. 2: Right side of Trackmobile; side where diesel engine is located



Photo No. 3: Front of Trackmobile



Photo No. 4: Left side of trackmobile



Photo No. 5: Battery box for Trackmobile; inside rear step; no arcing; batteries & connections intact



Photo No. 6: Fire damage to cab area of Trackmobile



Photo No. 7: Metal information tag for Titan Trackmobile

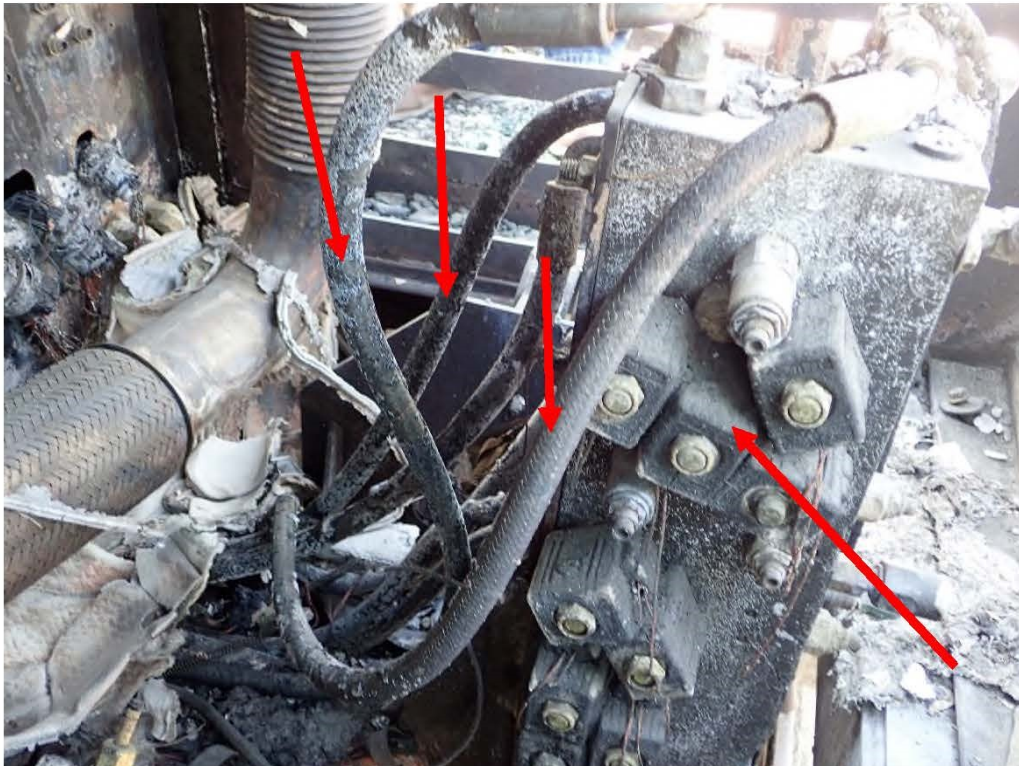


Photo No. 8: Hydraulic lines from Hydraulic Valve Block where operator controls engine remotely

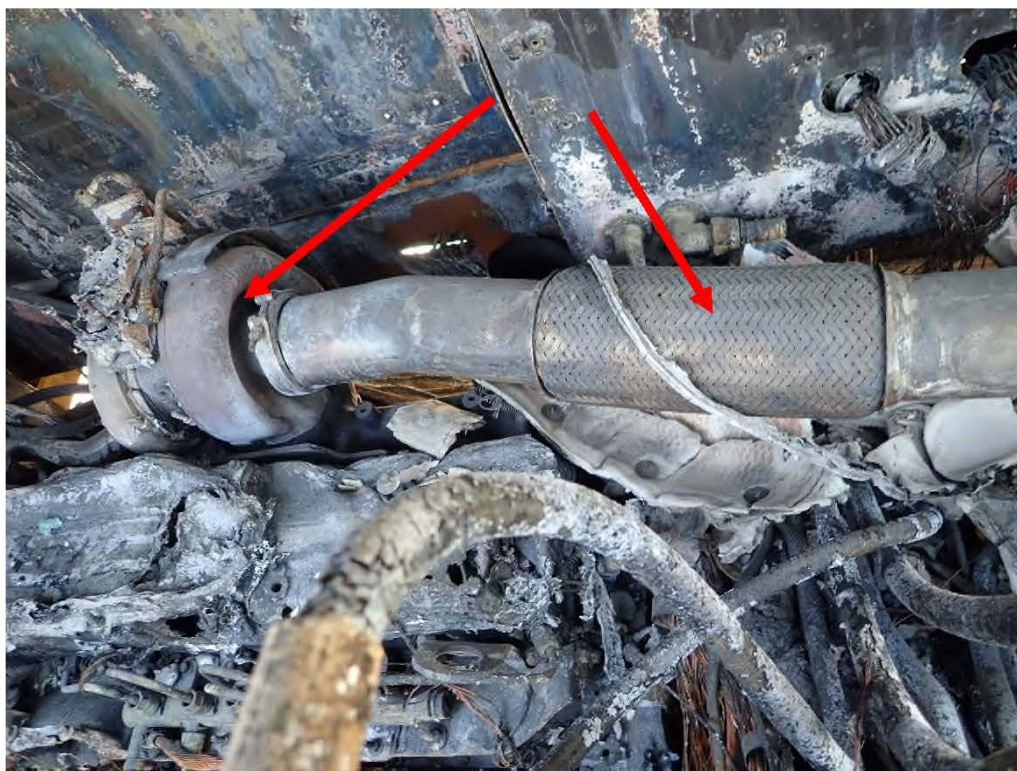


Photo No. 9: Diesel engine's turbo charger & exhaust assembly; area of fire origin



Photo No. 10: Scanreco radio remote control used on Trackmobile prior to fire



**Description:**

**PHOTO # 1**

Front Lt Overall  
View



**Description:**

**PHOTO # 2**

Front Rt Overall  
View



**Description:**

**PHOTO #3**

Rear Rt Overall  
View



**Description:**

**PHOTO #4**

Rear Lt Overall  
View



Description:

PHOTO # 5

ID



Description:

PHOTO # 6

Model





**Description:**

**PHOTO # 7**

Hour Meter



**Description:**

**PHOTO # 8**

Front View Of  
Damage



**Description:**

**PHOTO # 9**

Rear View Of  
Damage



**Description:**

**PHOTO # 10**

View Of Lt Side  
Damage



**Description:**

**PHOTO # 11**

View Of Lt Side  
Damage



**Description:**

**PHOTO # 12**

View Of Rt Side  
Damage



**Description:**

**PHOTO # 13**

View Of Rt Side  
Damage



**Description:**

**PHOTO # 14**

View Of Cab  
Damage



**Description:**

**PHOTO # 15**

View Of Cab  
Damage



**Description:**

**PHOTO # 16**

View Of Cab  
Damage



**Description:**

**PHOTO #17**

View Of Inside  
Cab Damage



**Description:**

**PHOTO #18**

View Of Inside  
Cab Damage



**Description:**

**PHOTO # 19**

View Of Inside  
Cab Damage



**Description:**

**PHOTO # 20**

View Of Inside  
Cab Damage



**Description:**

**PHOTO # 21**

View Of Damaged  
Engine



**Description:**

**PHOTO # 22**

View Of Damaged  
Engine





**Description:**

**PHOTO # 23**

View Of Damaged  
Engine



**Description:**

**PHOTO # 24**

View Of Damaged  
Hydraulic Pump &  
Lines



**Description:**

**PHOTO # 25**

View Of Radiator  
& Hoses



**Description:**

**PHOTO # 26**

Lower View Of  
Engine



**Description:**

**PHOTO # 27**

Lower View Of  
Engine



**Description:**

**PHOTO # 28**

Lower View Of  
Engine



**Description:**

**PHOTO # 29**

View Of Damage  
Hydraulic Pump &  
Hoses



**Description:**

**PHOTO # 30**

View Of Damage  
Hydraulic Hoses



**Description:**

**PHOTO # 31**

View Of Damage  
Hydraulic Hoses



**Description:**

**PHOTO # 32**

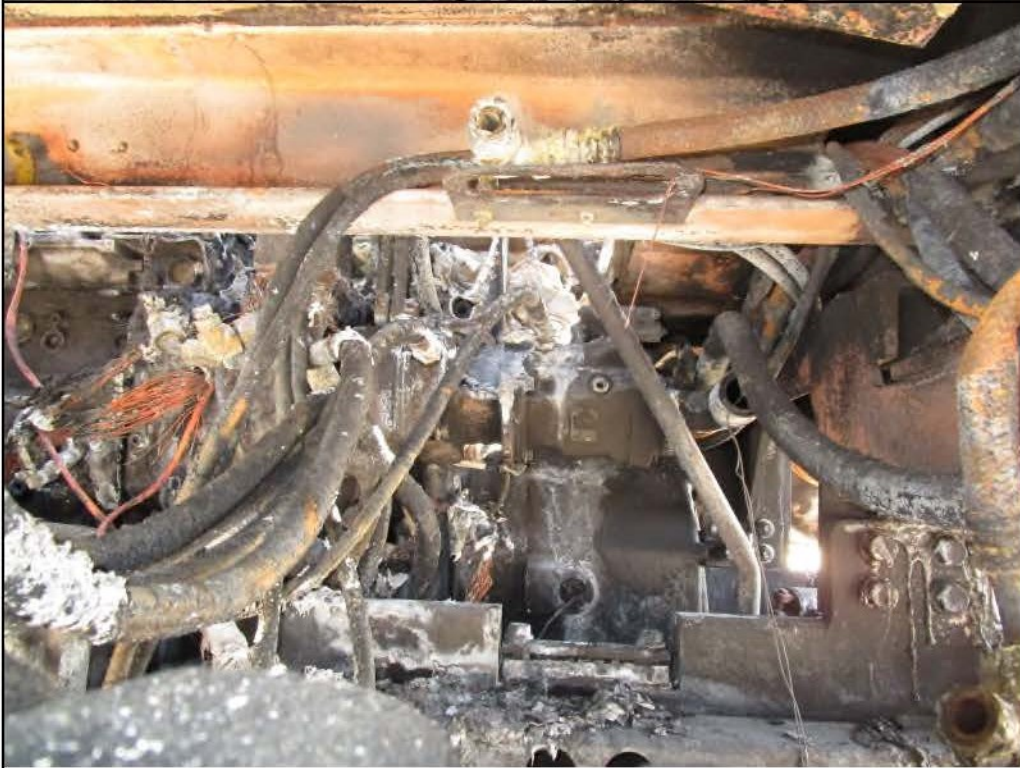
View Of Damage  
Hydraulic Hoses



**Description:**

**PHOTO # 33**

View Of Damage  
Hydraulic Hoses



**Description:**

**PHOTO # 34**

View Of Damage  
Hydraulic Hoses



**Description:**

**PHOTO # 35**

View Of Rt Side Of  
Lower Engine



**Description:**

**PHOTO # 36**

View Of Rt Side Of  
Lower Engine