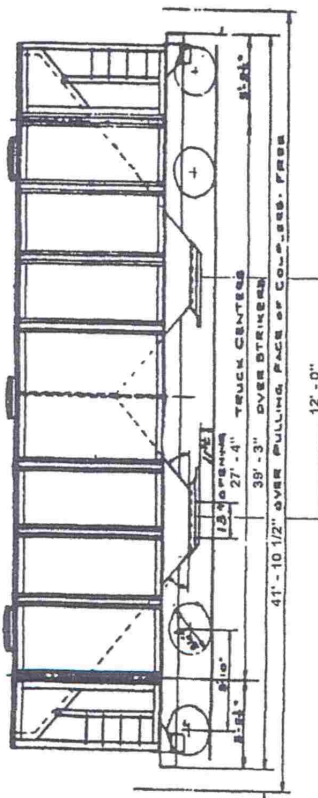


100 IN 3000 CUBIC FOOT COVERED HOPPER CARS

SERIES: 491
 DATES BUILT: TRINITY INDUSTRIES
 BUILDER:
 ORIGINAL LOT FILE:
 AAR CAR TYPE CODE: C-112

GENERAL SPECIFICATIONS

Length inside..... 36'-9 1/8"
 Length over strikers..... 39'-3"
 Length over coupler pulling face..... 41'-10 1/2"
 Length between truck centers..... 27'-4"
 Extreme width..... 10'-8"
 Width inside..... 10'-1 3/8"
 Extreme height, rail to top of hatch cover..... 15'-1"
 Discharge outlet openings..... 2(TWO)
 Roof hatch openings..... 3(THREE)
 Height of discharge outlet from rail..... 0'-11"
 Cubic capacity..... 3000 CU FT
 Lightweight (app.)..... 54,000 LBS
 Gross rail load..... 263,000 LBS
 AAR clearance diagram..... PLATE "B"



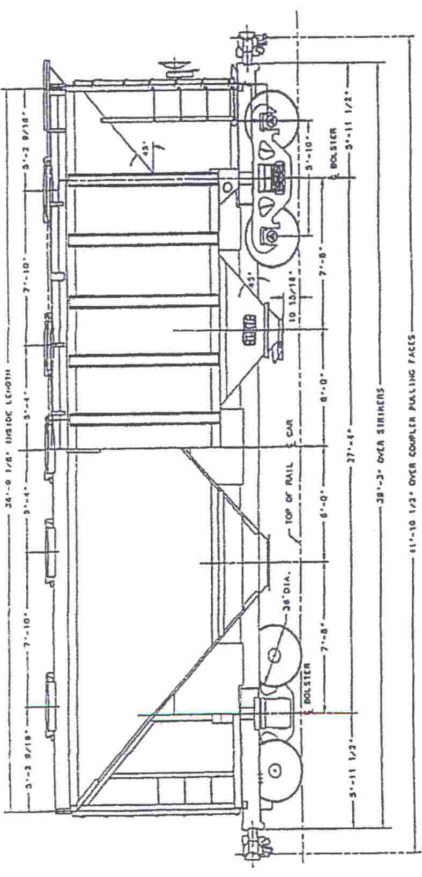
SPECIALTY ITEMS

ROOF HATCHES: 3(THREE) - 30" DIAMETER OPENINGS
 OUTLET: 2(TWO) - W.H. MINER 13" X 42" - BOLT UP GRAVITY MKE-8313
 TRUCKS: BARBER S-2-C WITH DOUBLE SIDE SPRINGS AND 16" CENTER PLATE EXT. PADS
 AIR BRAKES: ABDW - 8 1/2" X 12", UNIVERSAL - 2300- D
 DRAFT GEARS: MARK 50
 INTERIOR LINING: NOT LINED

NOTE:

REVISED: 12/01

100 TON 3000 CUBIC FOOT COVERED HOPPER CARS



SERIES: 5/90
 DATES BUILT: TRINITY INDUSTRIES
 BUILDER: TRINITY INDUSTRIES
 ORIGINAL LOT FILE: C-112
 AAR CAR TYPE CODE: C-112

GENERAL SPECIFICATIONS

Length inside.....	36'-9"
Length over strikers.....	39'-3"
Length over coupler pulling face.....	41'-10 1/2"
Length between truck centers.....	27'-4"
Extreme width.....	10'-5 5/16"
Width inside.....	10'-1"
Extreme height, rail to top of hatch cover.....	14'-11 7/8"
Discharge outlet openings.....	2 (TWO)
Roof hatch openings.....	3 (THREE)
Height of discharge outlet from rail.....	0'-1"
Cubic capacity.....	3000 CU FT
Lightweight (approx.).....	54,000 LBS
Gross rail load.....	263,000 LBS
AAR clearance diagram.....	PLATE "B"

SPECIALTY ITEMS

- ROOF HATCHES: 3 (THREE) 30" DIAMETER OPENINGS
- OUTLET: 2(TWO) - W.H. MINER 13" X 42" GRAVITY TYPE MKE- 8313
- TRUCKS: BARBER S-2-C WITH DOUBLE SIDE SPRING AND 16" CENTER PLATE EXT. PADS
- AIR BRAKES: ABDW 8 1/2" X 12", SAB SLACK ADJUSTER, SC-1 EMPTY LOAD DEVICE
- DRAFT GEARS: MARK 50
- INTERIOR LINING: NOT LINED

NOTE:

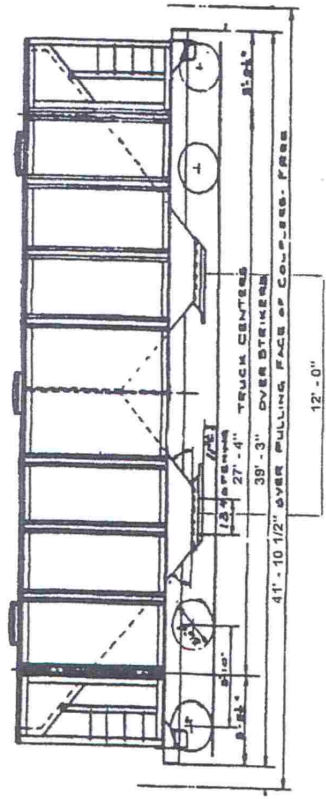
REVISED: 12/01

100 T IN 3000 CUBIC FOOT COVERED HOPPER CARS

SERIES: 1/88
 DATES BUILT: TRINITY INDUSTRIES
 BUILDER:
 ORIGINAL LOT FILE:
 AAR CAR TYPE CODE: C-112

GENERAL SPECIFICATIONS

Length inside..... 37'-2 9/10"
 Length over strikers..... 39'-3"
 Length over coupler pulling face..... 41'-10 7/8"
 Length between truck centers..... 27'-4"
 Extreme width..... 10'-5 5/16"
 Width inside..... 10'-1/2"
 Extreme height, rail to top of hatch cover..... 14'-11 7/8"
 Discharge outlet openings..... 2 (TWO)
 Roof hatch openings..... 3 (THREE)
 Height of discharge outlet from rail..... 0'-11"
 Cubic capacity..... 3000 CU FT
 Lightweight (approx)..... 55,500 LBS
 Gross rail load..... 263,000 LBS
 AAR clearance diagram..... PLATE "B"



SPECIALTY ITEMS

ROOF HATCHES: 3 (THREE) - 30" DIAMETER HATCHES
 OUTLET: 2 (TWO) W.H. MINER 13" X 42" BOLT UP GRAVITY TYPE
 TRUCKS: BARBER S-2-C WITH DOUBLE SIDE SPRING & 16" CENTER PLATE EXT. PADS
 AIR BRAKES: ABDW- 8 1/2" X 12", SAB SLACK ADJUSTER
 DRAFT GEARS: W.H. MINER TF-990
 INTERIOR LINING: NOT LINED

NOTE:

REVISED: 12/01